

How do families qualify for our preschool programs?



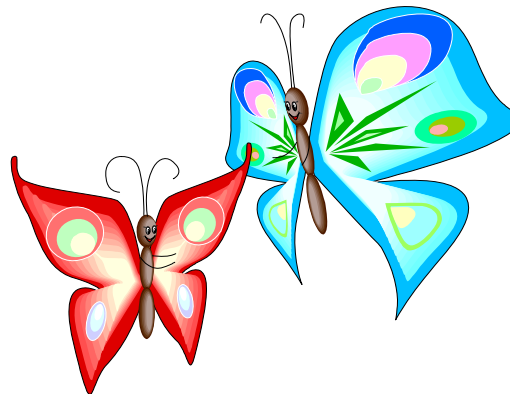
To qualify for special education, the child may (1) transition from a birth-to-three preschool special education program, (2) be referred by physician or daycare provider, or (3) be screened through the district's Childfind process and then further assessed in areas of demonstrated need. The Childfind process for 3 to 5 year olds is offered five times yearly and screens language, motor, social/emotional, adaptive, vision and hearing, and cognitive skills. During transition or after screening, the child is assessed by a professional team to determine whether he/she meets eligibility criteria and is in need of special education. This is completed in partnership with the parent/guardian.



To qualify for the Integrated Preschool, children must be 3 or 4 years old by August 31, 2008, reside in University Place School District and be toilet trained. Parents provide the transportation for their children.

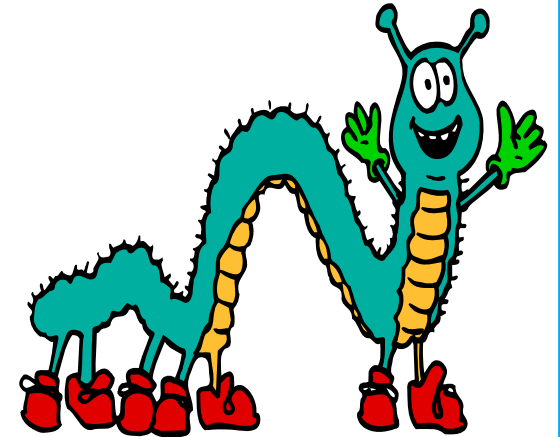


To qualify for ECEAP, the child's family must meet income eligibility requirements. Families register for the program through the District's ECEAP coordinator and are served on a first-come, first-served basis.



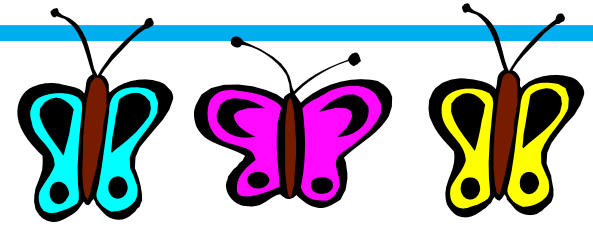
Contact the Special Services Office at 566-5645 to make a referral or to register for Childfind screening.

Early Childhood and Preschool Programs



University Place School District

Three Preschool Programs



Special Education Program

Our **Special Education Preschool Program** provides an educational opportunity for children from three to five years of age who are experiencing developmental delays. The developmental delay may be in one or more of the following areas: communication, fine or gross motor skills, pre-academic/cognitive, adaptive skills, and/or personal-social skills. Prospective students are either referred by their physician, a birth-to-three program, or are identified through the district's Childfind (a multidisciplinary screening process).

Services for students in the preschool who are eligible for special education are determined by each student's individualized education program (IEP). The IEP is developed by the educational staff in partnership with the family to address the student's special needs. Services generally include classroom instruction and additional related services as necessary (e.g., vision, speech/language services, or occupational or physical therapy). Additionally, staff work with families to share learning strategies, goals, and mutual support.

For **information** about special education preschool programs, call the district special services at 566-5645.



Integrated Community Preschool Program

Our **Integrated Community Preschool Program** is a tuition based program for children 3 and 4 years of age combined with children who qualify for special education services. In this program, children will learn in a structured, nurturing, and integrated teaching environment. Children with special needs will receive their IEP services within the preschool classroom. The half-day classes will be held four days per week.

For **information** about our Integrated Community Preschool, contact the Educational Service Center, 566-5600, regarding registration procedures and availability; or, log on to our website at www.upsd.wednet.edu.

Services provided for all of our preschools include early literacy, social, and fine or gross motor skills development in a language rich environment.

All these programs provide a foundation for success for our preschoolers and give them opportunities to learn valuable skills that will assist them in their future school experiences.



Early Childhood Education Assistance Program

Early Childhood Education Assistance Program

(ECEAP) is a state-funded program for children from low-income families who are age four by August 31. Children who are age four by December 31 may also qualify if space is available. The program is similar to the federally funded Head Start Program. Children qualify for this program on the basis of the family income. The program is coordinated and staffed through the Pierce County Community Action Agency.

University Place School District provides school space and administrative assistance to ensure services for children in our district who qualify.

Services provided to students who qualify for ECEAP include half-day classroom instruction three days a week, one or two meals per day, and periodic health screening. Additionally, staff work with families to share information, strategies, activities, and resources for the child.

For **information** about ECEAP and registration procedures, call Pierce County Community Services at (253) 798-7379 or 1-800-562-0336, extension 7379. You may call the University Place ECEAP at (253) 565-1454.